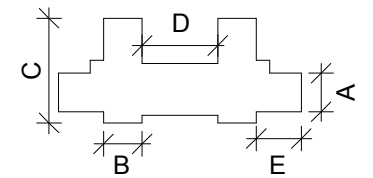
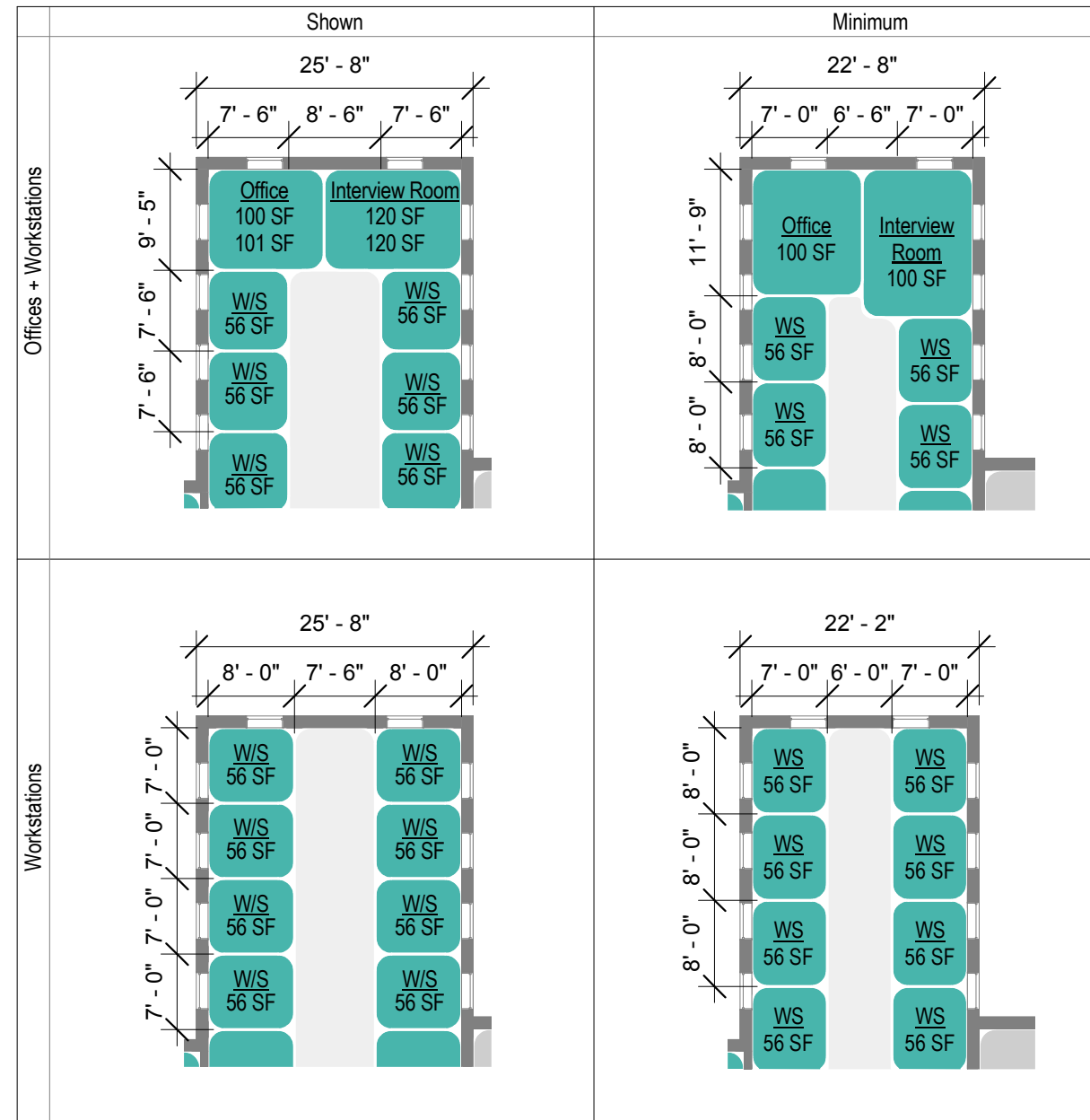


Tool Workflow Part 2 : Determine Required Program Space for Clinical Services Administration

- Determine required DGSF for Clinical Services Administration by multiplying DGSF per FTE (See Table 1.1) by required number of FTE (30). (Enter requirements into Tool)
- Check for Clinical Services Administration fatal flaws:
 - Minimum 5' corridor width. (Enter min width of corridor into tool.)
- Estimate number of seats that will fit into building. Divide available area by required DGSF/FTE. Use following questions to determine DGSF/FTE in building:
 - Existing Load Bearing Walls? (Add 10% SF/occupant)
 - Other interior partitions to remain? (Add 12% SF/occupant)
- Tool generates number of occupants that can be fit into building. (Tool Output)

Table 1.0 - DGSF in Chillicothe Building 2 - Clinical Services Administration Program with Interior Partitions	
DGSF (per level)	
5648 SF	

Table 1.1 - Clinical Services Administration Prototype with Interior Partitions DGSF per Full-Time Equivalent		
per 30 FTE		Increase in DGSF/FTE from Shown DGSF without Interior Partitions Prototype
Req DGSF	Shown DGSF	
138 SF	188 SF	112.7%



Key Plan with Exterior Dimensions

Bldg. 2 Tool Dimensions

- A : 25' - 8"
- B : 25' - 8"
- C : 69' - 8"
- D : 50' - 4"
- E : 30' - 0"

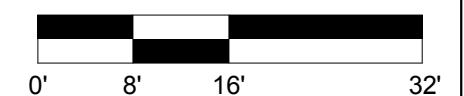
- OFFICE COHORTS
- SUPPORT SPACE
- EXISTING TO REMAIN
- NEW VERTICAL CIRCULATION
- STORAGE/UTILITY
- CIRCULATION
- OFFICE SUPPORT

Building 2 - Chillicothe, OH VA Medical Center Campus

NIBS/VA HISTORIC PRESERVATION REUSE INITIATIVE

Clinical Services Administration Prototype Program with Existing Interior Partitions Workflow

05/03/2017

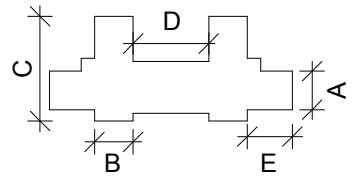


Prototype Program Schedule

Clinical Services Administration with Interior Partitions Prototype Program Schedule			
Name	Req. Net Area (from Space Planning Criteria)	Prototype Area (shown on floor plan)	Difference
Circulation	955 SF	1238 SF	283 SF
FA.1			
Conference	600 SF	936 SF	336 SF
Interview Room	360 SF	598 SF	238 SF
Office	600 SF	830 SF	230 SF
Storage	160 SF	335 SF	175 SF
Support	0 SF	223 SF	223 SF
Toilet	120 SF	146 SF	26 SF
W/S	1344 SF	1344 SF	0 SF
Total DGSF	4139 SF	5648 SF	1509 SF

Areas in Prototype Layout excluded from DGSF:

Clinical Services Administration with Interior Partitions - (Building Support)	
Name	Prototype Area (shown on floor plan)
Building Support	
Elevator	119 SF
Stair	489 SF
Utility	115 SF
Total Building Support Area	724 SF



Key Plan with Exterior Dimensions

Bldg. 2 Tool Dimensions

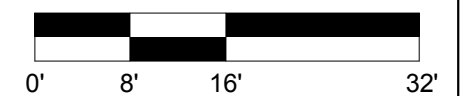
A : 25' - 8"
 B : 25' - 8"
 C : 69' - 8"
 D : 50' - 4"
 E : 30' - 0"

Building 2 - Chillicothe, OH VA
 Medical Center Campus

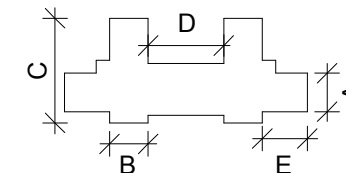
NIBS/VA HISTORIC
 PRESERVATION REUSE
 INITIATIVE

Clinical Services Administration
 Prototype Program with Existing
 Interior Partitions

05/03/2017



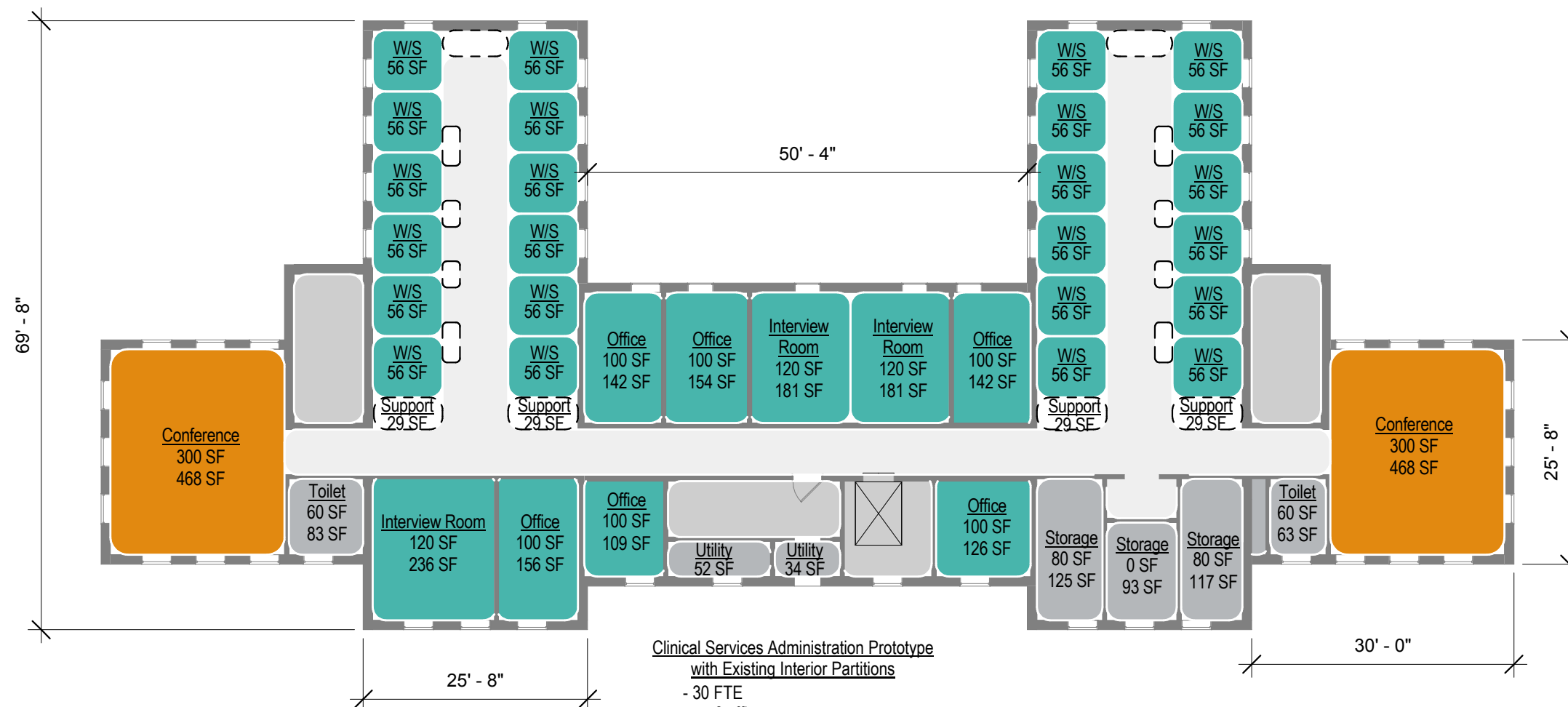
GOODYCLANCY
 ARCHITECTURE / PLANNING / PRESERVATION



Key Plan with Exterior Dimensions

Bldg. 2 Tool Dimensions

- A : 25' - 8"
- B : 25' - 8"
- C : 69' - 8"
- D : 50' - 4"
- E : 30' - 0"



Clinical Services Administration Prototype
with Existing Interior Partitions
- 30 FTE
- 6 offices
- 24 workstations

Clinical Services Administration DNTG Factor - 1.30-1.28

- OFFICE COHORTS
 - SUPPORT SPACE
 - EXISTING TO REMAIN
 - NEW VERTICAL CIRCULATION
 - STORAGE/UTILITY
 - CIRCULATION
 - OFFICE SUPPORT
- Office Room Use
150 SF Required SF
200 SF Shown SF

DRAFT

Building 2 - Chillicothe, OH VA
Medical Center Campus

NIBS/VA HISTORIC
PRESERVATION REUSE
INITIATIVE

Clinical Services Administration
Prototype Program Floor Plan with
Existing Interior Partitions

05/03/2017

